

Phospho-IRS1 (Ser312) Antibody



PACO23897

Product Information

Size:

100ul

Reactivity:

Human, Mouse, Rat

Source:

Rabbit

Isotype:

IgG

Applications:

ELISA, WB

Recommended dilutions:

ELISA:1:2000-1:10000, WB:1:500-1:1000

Protein Background:

May mediate the control of various cellular processes by insulin. When phosphorylated by the insulin receptor binds specifically to various cellular proteins containing SH2 domains such as phosphatidylinositol 3-kinase p85 subunit or GRB2. Activates phosphatidylinositol 3-kinase when bound to the regulatory p85 subunit.

Gene ID:

IRS1

Uniprot

P35568

Synonyms:

HIRS-1; IRS1; Insulin receptor substrate 1

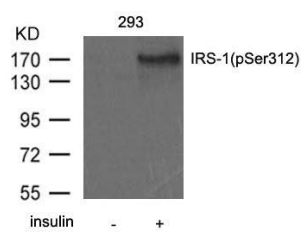
Immunogen:

Peptide sequence around phosphorylation site of serine 312 (A-T-S(p)-P-A) derived from Human IRS-1.

Storage:

Supplied at 1.0mg/mL in phosphate buffered saline (without Mg²⁺ and Ca²⁺), pH 7.4, 150mM NaCl, 0.02% sodium azide and 50% glycerol.

Product Images



Western blot analysis of extract from 293 cells untreated or treated with insulin using IRS-1(Phospho-Ser312) antibody.