

# Phospho-PXN (Tyr31) Antibody



PACO23865

---

## Product Information

**Size:**

100ul

**Reactivity:**

Human

**Source:**

Rabbit

**Isotype:**

IgG

**Applications:**

ELISA, WB

**Recommended dilutions:**

ELISA:1:2000-1:10000, WB:1:500-1:1000

**Protein Background:****Gene ID:**

PXN

**Uniprot**

P49023

**Synonyms:**

PAXI; PXN;

**Immunogen:**

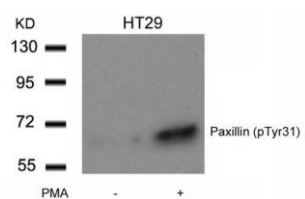
Peptide sequence around phosphorylation site of tyrosine 31 (T-P-Y(p)-S-Y) derived from Human Paxillin.

**Storage:**

Supplied at 1.0mg/mL in phosphate buffered saline (without Mg<sup>2+</sup> and Ca<sup>2+</sup>), pH 7.4, 150mM NaCl, 0.02% sodium azide and 50% glycerol.

## Product Images

---



Western blot analysis of extracts from HT29 cells untreated or treated with PMA using Paxillin(Phospho-Tyr31) Antibody.