

Phospho-SNCA (Ser129) Antibody



PACO23862

Product Information

Size:

100ul

Reactivity:

Human, Mouse, Rat

Source:

Rabbit

Isotype:

IgG

Applications:

ELISA, WB

Recommended dilutions:

ELISA:1:2000-1:10000, WB:1:500-1:1000

Protein Background:

May be involved in the regulation of dopamine release and transport. Soluble protein, normally localized primarily at the presynaptic region of axons, which can form filamentous aggregates that are the major non amyloid component of intracellular inclusions in several neurodegenerative diseases (synucleinopathies). Induces fibrillization of microtubule-associated protein tau. Reduces neuronal responsiveness to various apoptotic stimuli, leading to a decreased caspase-3 activation.

Gene ID:

SNCA

Uniprot

P37840

Synonyms:

NACP; SYN; SYUA

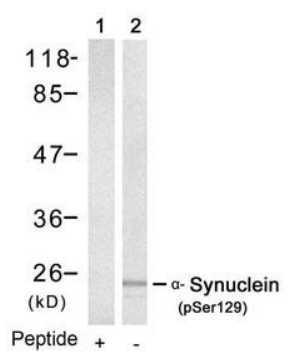
Immunogen:

Peptide sequence around phosphorylation site of serine 129 (M-P-S(p)-E-E) derived from Human α -Synuclein.

Storage:

Supplied at 1.0mg/mL in phosphate buffered saline (without Mg²⁺ and Ca²⁺), pH 7.4, 150mM NaCl, 0.02% sodium azide and 50% glycerol.

Product Images



Western blot analysis of extracts from mouse brain tissue using α -Synuclein(Phospho-Ser129) Antibody(Lane 2) and the same antibody preincubated with blocking peptide(Lane1).