

# Phospho-MAPT (Ser235) Antibody



PACO23853

---

## Product Information

**Size:**

100ul

**Reactivity:**

Human, Mouse, Rat

**Source:**

Rabbit

**Isotype:**

IgG

**Applications:**

ELISA, WB

**Recommended dilutions:**

ELISA:1:2000-1:10000, WB:1:500-1:1000

**Protein Background:**

Promotes microtubule assembly and stability, and might be involved in the establishment and maintenance of neuronal polarity. The C-terminus binds axonal microtubules while the N-terminus binds neural plasma membrane components, suggesting that tau functions as a linker protein between both. Axonal polarity is predetermined by tau localization (in the neuronal cell) in the domain of the cell body defined by the centrosome. The short isoforms allow plasticity of the cytoskeleton whereas the longer isoforms may preferentially play a role in its stabilization.

**Gene ID:**

MAPT

**Uniprot**

P10636

**Synonyms:**

MAPT; MTAPT; MTBT1; Neurofibrillary tangle protein; PHF-tau

**Immunogen:**

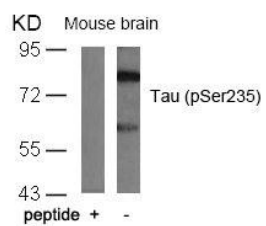
Peptide sequence around phosphorylation site of serine 235 (P-K-S(p)-P-S) derived from Human Tau.

**Storage:**

Supplied at 1.0mg/mL in phosphate buffered saline (without Mg<sup>2+</sup> and Ca<sup>2+</sup>), pH 7.4, 150mM NaCl, 0.02% sodium azide and 50% glycerol.

## Product Images

---



Western blot analysis of extracts from mouse brain tissue using Tau(Phospho-Ser235) Antibody and the same antibody preincubated with blocking peptide.