

CDKN2A Antibody



PACO23834

Product Information

Size:

100ul

Reactivity:

Human

Source:

Rabbit

Isotype:

IgG

Applications:

ELISA, WB, IHC, IF

Recommended dilutions:

ELISA:1:2000-1:10000, WB:1:500-1:3000,
IHC:1:50-1:100, IF:1:100-1:500

Protein Background:

Gene ID:

CDKN2A

Uniprot

Q8N726

Synonyms:

CDK4I; CMM2; MLM; MTS1; TP16

Immunogen:

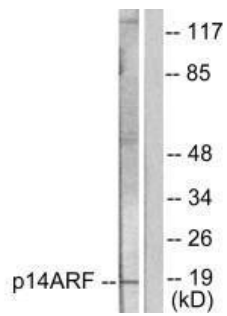
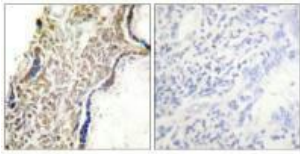
Synthesized peptide derived from human p14 ARF antibody.

Storage:

Rabbit IgG in phosphate buffered saline (without Mg²⁺ and Ca²⁺), pH 7.4, 150mM NaCl, 0.02% sodium azide and 50% glycerol.

Product Images

Immunohistochemical analysis of paraffin-embedded human placenta tissue using p14 ARF antibody.



Western blot analysis of extracts from HeLa cells, using p14 ARF antibody.

Immunofluorescence analysis of HeLa cells, using p14 ARF antibody.

