

## Product Information

**Size:**

100ul

**Reactivity:**

Human

**Source:**

Rabbit

**Isotype:**

IgG

**Applications:**

ELISA, WB, IHC, IF

**Recommended dilutions:**

ELISA:1:2000-1:10000, WB:1:500-1:3000,  
IHC:1:50-1:100, IF:1:100-1:500

**Protein Background:**

A large number of extracellular matrix proteins have been found to contain variations of the epidermal growth factor (EGF) domain and have been implicated in functions as diverse as blood coagulation, activation of complement and determination of cell fate during development. The protein encoded by this gene contains four EGF2 domains and six calcium-binding EGF2 domains. This gene is necessary for elastic fiber formation and connective tissue development. Defects in this gene are cause of an autosomal recessive cutis laxa syndrome. Alternatively spliced transcript variants have been identified for this gene.

**Gene ID:**

EFEMP2

**Uniprot**

O95967

**Synonyms:**

EGF-containing fibulin-like extracellular matrix protein 2; FBLN4;

**Immunogen:**

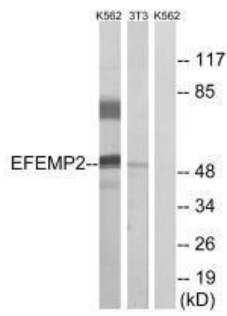
Synthesized peptide derived from internal of human EFEMP2.

**Storage:**

Rabbit IgG in phosphate buffered saline (without Mg<sup>2+</sup> and Ca<sup>2+</sup>), pH 7.4, 150mM NaCl, 0.02% sodium azide and 50% glycerol.

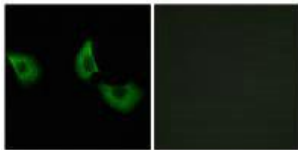
## Product Images

---



Western blot analysis of extracts from K562 cells and 3T3 cells, using EFEMP2 antibody.

Immunofluorescence analysis of A549 cells, using EFEMP2 antibody.



Immunohistochemistry analysis of paraffin-embedded human placenta tissue using EFEMP2 antibody.

