

# CLDN6 Antibody



PACO23800

---

## Product Information

**Size:**

100ul

**Reactivity:**

Human

**Source:**

Rabbit

**Isotype:**

IgG

**Applications:**

ELISA, WB, IHC, IF

**Recommended dilutions:**

ELISA:1:2000-1:10000, WB:1:500-1:3000,  
IHC:1:50-1:100, IF:1:100-1:500

**Protein Background:**

Plays a major role in tight junction-specific obliteration of the intercellular space By similarity.

**Gene ID:**

CLDN6

**Uniprot**

P56747

**Synonyms:**

claudin 6; claudin-6; CLD6; Skullin 2;

**Immunogen:**

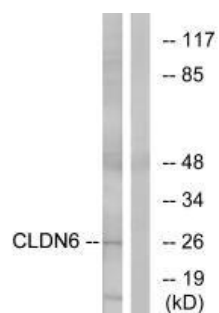
Synthesized peptide derived from internal of human CLDN6.

**Storage:**

Rabbit IgG in phosphate buffered saline (without Mg<sup>2+</sup> and Ca<sup>2+</sup>), pH 7.4, 150mM NaCl, 0.02% sodium azide and 50% glycerol.

## Product Images

---



Western blot analysis of extracts from Jurkat cells, using CLDN6 antibody.

Immunofluorescence analysis of HUVEC cells, using CLDN6 antibody.



Immunohistochemistry analysis of paraffin-embedded human ovary tissue using CLDN6 antibody.

