

APOL4 Antibody



PACO23795

Product Information

Size:

100ul

Reactivity:

Human

Source:

Rabbit

Isotype:

IgG

Applications:

ELISA, WB, IHC, IF

Recommended dilutions:

ELISA:1:2000-1:10000, WB:1:500-1:3000,
IHC:1:50-1:100, IF:1:100-1:500

Protein Background:

May play a role in lipid exchange and transport throughout the body. May participate in reverse cholesterol transport from peripheral cells to the liver By similarity.

Gene ID:

APOL4

Uniprot

Q9BPW4

Synonyms:

APOL-IV; apolipoprotein L; 4; apolipoprotein L-IV; apolipoprotein-L4

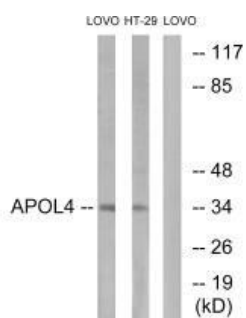
Immunogen:

Synthesized peptide derived from C-terminal of human APOL4.

Storage:

Rabbit IgG in phosphate buffered saline (without Mg²⁺ and Ca²⁺), pH 7.4, 150mM NaCl, 0.02% sodium azide and 50% glycerol.

Product Images



Western blot analysis of extracts from LOVO cells and HT-29 cells, using APOL4 antibody.

Immunofluorescence analysis of MCF-7 cells, using APOL4 antibody.



Immunohistochemistry analysis of paraffin-embedded human liver carcinoma tissue using APOL4 antibody.

