

MRPL11 Antibody



PACO23790

Product Information

Size:

100ul

Reactivity:

Human

Source:

Rabbit

Isotype:

IgG

Applications:

ELISA, WB, IHC, IF

Recommended dilutions:

ELISA:1:2000-1:10000, WB:1:500-1:3000,
IHC:1:50-1:100, IF:1:100-1:500

Protein Background:

This nuclear gene encodes a 39S subunit component of the mitochondrial ribosome. Alternative splicing results in multiple transcript variants. Pseudogenes for this gene are found on chromosomes 5 and 12.

Gene ID:

MRPL11

Uniprot

Q9Y3B7

Synonyms:

cgi-113; cgi-113 protein; l11mt; mgc111024; mitochondrial ribosomal protein l11

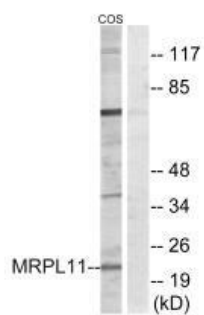
Immunogen:

Synthesized peptide derived from internal of human MRPL11.

Storage:

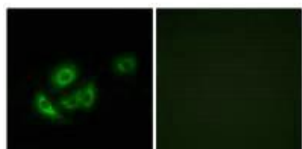
Rabbit IgG in phosphate buffered saline (without Mg²⁺ and Ca²⁺), pH 7.4, 150mM NaCl, 0.02% sodium azide and 50% glycerol.

Product Images



Western blot analysis of extracts from COS cells, using MRPL11 antibody.

Immunofluorescence analysis of A549 cells, using MRPL11 antibody.



Immunohistochemistry analysis of paraffin-embedded human cervix carcinoma tissue using MRPL11 antibody.

