

PACO23781

---

## Product Information

**Size:**

100ul

**Reactivity:**

Human

**Source:**

Rabbit

**Isotype:**

IgG

**Applications:**

ELISA, WB, IHC, IF

**Recommended dilutions:**

ELISA:1:2000-1:10000, WB:1:500-1:3000,  
IHC:1:50-1:100, IF:1:100-1:500

**Protein Background:**

Metabolizes several precarcinogens, drugs, and solvents to reactive metabolites. Inactivates a number of drugs and xenobiotics and also bioactivates many xenobiotic substrates to their hepatotoxic or carcinogenic forms.

**Gene ID:**

CYP2E1

**Uniprot**

P05181

**Synonyms:**

CP2E1; CYP2E; CYP11E1; Cytochrome P450 2E1; P450-J

**Immunogen:**

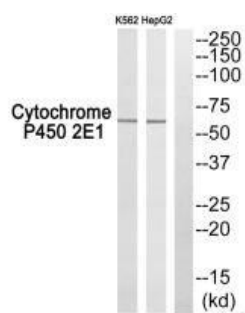
Synthesized peptide derived from C-terminal of human Cytochrome P450 2E1.

**Storage:**

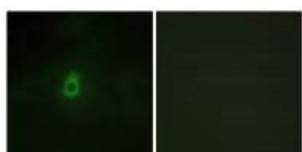
Rabbit IgG in phosphate buffered saline (without Mg<sup>2+</sup> and Ca<sup>2+</sup>), pH 7.4, 150mM NaCl, 0.02% sodium azide and 50% glycerol.

## Product Images

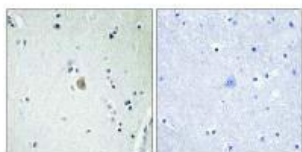
---



Western blot analysis of extracts from K562 cells and HepG2 cells, using Cytochrome P450 2E1 antibody.



Immunofluorescence analysis of HepG2 cells, using Cytochrome P450 2E1 antibody.



Immunohistochemistry analysis of paraffin-embedded human brain tissue, using Cytochrome P450 2E1 antibody.