

COX17 Antibody



PACO23780

Product Information

Size:

100ul

Reactivity:

Human, Mouse, Rat

Source:

Rabbit

Isotype:

IgG

Applications:

ELISA, WB, IHC

Recommended dilutions:

ELISA:1:2000-1:10000, WB:1:500-1:3000,
IHC:1:50-1:100

Protein Background:

Copper chaperone for cytochrome c oxidase (COX). Binds two copper ions and deliver them to the Cu(A) site of COX By similarity.

Gene ID:

COX17

Uniprot

Q14061

Synonyms:

Cytochrome c oxidase copper chaperone; COX17;

Immunogen:

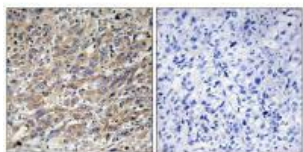
Synthesized peptide derived from N-terminal of human COX17.

Storage:

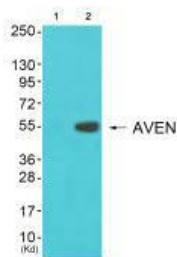
Rabbit IgG in phosphate buffered saline (without Mg²⁺ and Ca²⁺), pH 7.4, 150mM NaCl, 0.02% sodium azide and 50% glycerol.

Product Images

Immunohistochemistry analysis of paraffin-embedded human liver carcinoma tissue using COX17 antibody.



Western blot analysis of extracts from 3T3 cells (Lane 2), using COX17 antibody. The lane on the left is treated with synthesized peptide.



Western blot analysis of extracts from HeLa cells, HepG2 cells, COLO cells and 293 cells, using COX17 antibody.

