

PACO23777

Product Information

Size:

100ul

Reactivity:

Human, Mouse

Source:

Rabbit

Isotype:

IgG

Applications:

ELISA, WB, IHC, IF

Recommended dilutions:

ELISA:1:2000-1:10000, WB:1:500-1:3000,
IHC:1:50-1:100, IF:1:100-1:500

Protein Background:**Gene ID:**

HCCS

Uniprot

P53701

Synonyms:

CCHL; cytochrome c-type heme lyase; EC 4.4.1.17;

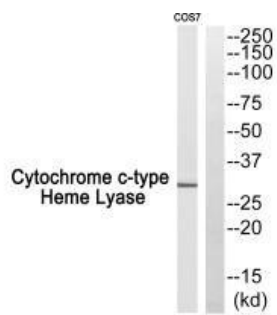
Immunogen:

Synthesized peptide derived from internal of human CCHL.

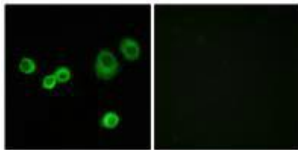
Storage:

Rabbit IgG in phosphate buffered saline (without Mg²⁺ and Ca²⁺), pH 7.4, 150mM NaCl, 0.02% sodium azide and 50% glycerol.

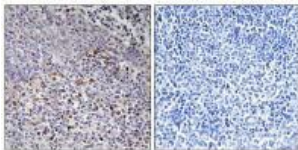
Product Images



Western blot analysis of extracts from COS7 cells, using Cytochrome c-type Heme Lyase antibody.



Immunofluorescence analysis of MCF-7 cells, using Cytochrome c-type Heme Lyase antibody.



Immunohistochemistry analysis of paraffin-embedded human tonsil tissue using Cytochrome c-type Heme Lyase antibody.