

CADM4 Antibody



PACO23776

Product Information

Size:

100ul

Reactivity:

Human, Mouse, Rat

Source:

Rabbit

Isotype:

IgG

Applications:

ELISA, WB, IHC, IF

Recommended dilutions:

ELISA:1:2000-1:10000, WB:1:500-1:3000,
IHC:1:50-1:100, IF:1:100-1:500

Protein Background:

Involved in the cell-cell adhesion. Has calcium- and magnesium-independent cell-cell adhesion activity. May have tumor-suppressor activity.

Gene ID:

CADM4

Uniprot

Q8NFZ8

Synonyms:

Cell adhesion molecule 4 [Precursor]; Immunoglobulin superfamily member 4C; Nectin-like protein 4; TSLC1-like protein 2; CADM4

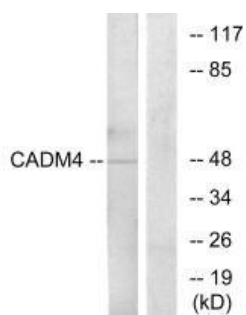
Immunogen:

Synthesized peptide derived from internal of human CADM4.

Storage:

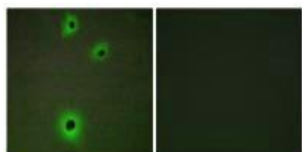
Rabbit IgG in phosphate buffered saline (without Mg²⁺ and Ca²⁺), pH 7.4, 150mM NaCl, 0.02% sodium azide and 50% glycerol.

Product Images



Western blot analysis of extracts from RAW264.7 cells, using CADM4 antibody.

Immunofluorescence analysis of A549 cells, using CADM4 antibody.



Immunohistochemistry analysis of paraffin-embedded human brain tissue using CADM4 antibody.

