

PACO23768

Product Information

Size:

100ul

Reactivity:

Human, Mouse

Source:

Rabbit

Isotype:

IgG

Applications:

ELISA, WB, IHC, IF

Recommended dilutions:

ELISA:1:2000-1:10000, WB:1:500-1:3000,
IHC:1:50-1:100, IF:1:100-1:500

Protein Background:

Phosphorylates Ins(1,3,4,5,6)P5 at position 2 to form Ins(1,2,3,4,5,6)P6 (InsP6 or phytate). InsP6 is involved in many processes such as mRNA export, non-homologous end-joining, endocytosis, ion channel regulation. It also protects cells from TNF-alpha-induced apoptosis.

Gene ID:

IPPK

Uniprot

Q9H8X2

Synonyms:

EC 2.7.1.158; Inositol-1; 3; 4; 5

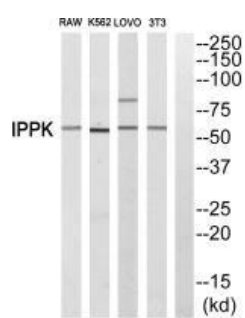
Immunogen:

Synthesized peptide derived from internal of human IPPK.

Storage:

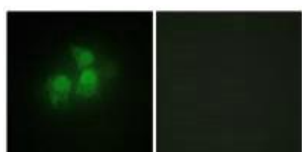
Rabbit IgG in phosphate buffered saline (without Mg²⁺ and Ca²⁺), pH 7.4, 150mM NaCl, 0.02% sodium azide and 50% glycerol.

Product Images



Western blot analysis of extracts from RAW cells, K562 cells, LOVO cells and 3T3 cells, using IPPK antibody.

Immunofluorescence analysis of HepG2 cells, using IPPK antibody.



Immunohistochemistry analysis of paraffin-embedded human brain tissue, using IPPK antibody.

