

Product Information

Size:

100ul

Reactivity:

Human

Source:

Rabbit

Isotype:

IgG

Applications:

ELISA, WB, IHC, IF

Recommended dilutions:

ELISA:1:2000-1:10000, WB:1:500-1:3000,
IHC:1:50-1:100, IF:1:100-1:500

Protein Background:

Does not exhibit calcium-activated chloride channel (CaCC) activity. May play a role in cell-cell interactions.

Gene ID:

ANO7

Uniprot

Q6IWH7

Synonyms:

New gene expressed in prostate; Prostate cancer-associated protein 5; IPCA-5; Dresden-transmembrane protein of the prostate; D-TMPP

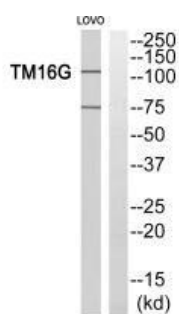
Immunogen:

Synthesized peptide derived from C-terminal of human TM16G.

Storage:

Rabbit IgG in phosphate buffered saline (without Mg²⁺ and Ca²⁺), pH 7.4, 150mM NaCl, 0.02% sodium azide and 50% glycerol.

Product Images



Western blot analysis of extracts from LOVO cells, using TM16G antibody.

Immunofluorescence analysis of HepG2 cells, using TM16G antibody.



Immunohistochemistry analysis of paraffin-embedded human prostate carcinoma tissue, using TM16G antibody.

