

LIMK2 Antibody



PACO23746

Product Information

Size:

100ul

Reactivity:

Human, Mouse, Rat

Source:

Rabbit

Isotype:

IgG

Applications:

ELISA, WB, IHC, IF

Recommended dilutions:

ELISA:1:2000-1:10000, WB:1:500-1:3000,
IHC:1:50-1:100, IF:1:100-1:500

Protein Background:

Displays serine/threonine-specific phosphorylation of myelin basic protein and histone (MBP) in vitro.

Gene ID:

LIMK2

Uniprot

P53671

Synonyms:

EC 2.7.11.1; LIM domain kinase 2; LIMK-2; kinase LIMK2;

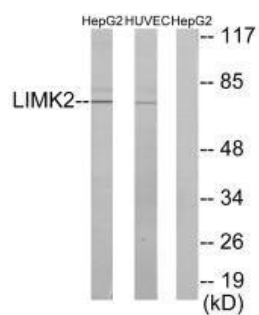
Immunogen:

Synthesized peptide derived from internal of human LIMK2.

Storage:

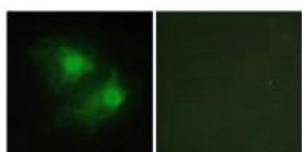
Rabbit IgG in phosphate buffered saline (without Mg²⁺ and Ca²⁺), pH 7.4, 150mM NaCl, 0.02% sodium azide and 50% glycerol.

Product Images



Western blot analysis of extracts from HepG2 cells and HUVEC cells, using LIMK2 antibody.

Immunofluorescence analysis of HeLa cells, using LIMK2 antibody.



Immunohistochemistry analysis of paraffin-embedded human heart tissue using LIMK2 antibody.

