

# CDK7 Antibody



PACO23705

---

## Product Information

**Size:**

100ul

**Reactivity:**

Human, Mouse

**Source:**

Rabbit

**Isotype:**

IgG

**Applications:**

ELISA, WB, IHC

**Recommended dilutions:**

ELISA:1:2000-1:10000, WB:1:500-1:3000,  
IHC:1:50-1:100

**Protein Background:**

**Gene ID:**

CDK7

**Uniprot**

P50613

**Synonyms:**

39 kDa protein kinase; CAK; CAK1; CDK-activating kinase; CDKN7

**Immunogen:**

Synthesized peptide derived from Internal of human CDK7.

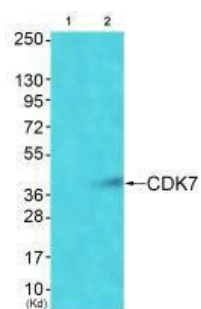
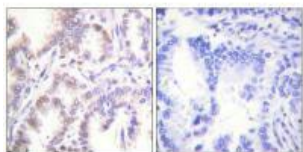
**Storage:**

Rabbit IgG in phosphate buffered saline (without Mg<sup>2+</sup> and Ca<sup>2+</sup>), pH 7.4, 150mM NaCl, 0.02% sodium azide and 50% glycerol.

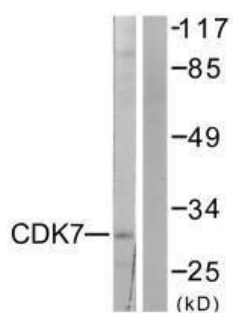
## Product Images

---

Immunohistochemistry analysis of paraffin-embedded human lung carcinoma tissue using CDK7 antibody.



Western blot analysis of extracts from Colo cells using CDK7 antibody. The lane on the left is treated with synthesized peptide.



Western blot analysis of extracts from 293 cells, using CDK7 antibody.