

POU2F2 Antibody



PACO23687

Product Information

Size:

100ul

Reactivity:

Human, Mouse, Rat

Source:

Rabbit

Isotype:

IgG

Applications:

ELISA, WB, IF

Recommended dilutions:

ELISA:1:2000-1:10000, WB:1:500-1:3000,
IF:1:100-1:500

Protein Background:**Gene ID:**

POU2F2

Uniprot

P09086

Synonyms:

41914; OTF2; OCTAMER-BINDING TRANSCRIPTION FACTOR 2; OTF LYMPHOID-SPECIFIC 2;

Immunogen:

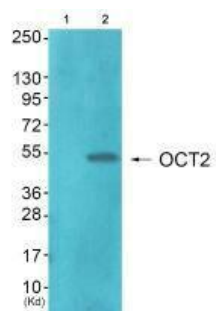
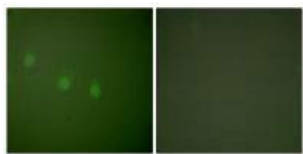
Synthesized peptide derived from human OCT2 antibody.

Storage:

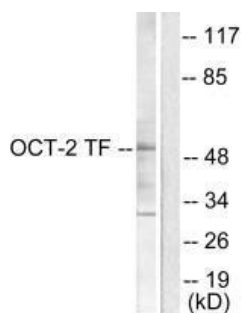
Rabbit IgG in phosphate buffered saline (without Mg²⁺ and Ca²⁺), pH 7.4, 150mM NaCl, 0.02% sodium azide and 50% glycerol.

Product Images

Immunofluorescence analysis of COS7 cells, using OCT2 antibody.



Western blot analysis of extracts from JK cells (Lane 2), using OCT2 antibody. The lane on the left is treated with synthesized peptide.



Western blot analysis of extracts from COS7 cells, using OCT2 antibody.