

MMP7 Antibody



PACO23684

Product Information

Size:

100ul

Reactivity:

Human, Mouse, Rat

Source:

Rabbit

Isotype:

IgG

Applications:

ELISA, WB, IHC

Recommended dilutions:

ELISA:1:2000-1:10000, WB:1:500-1:3000,
IHC:1:50-1:100

Protein Background:

Degrades casein, gelatins of types I, III, IV, and V, and fibronectin. Activates procollagenase.

Gene ID:

MMP7

Uniprot

P09237

Synonyms:

PUMP1; PUTATIVE METALLOPROTEINASE I; matrix metalloproteinase 7 (matrilysin; uterine);

Immunogen:

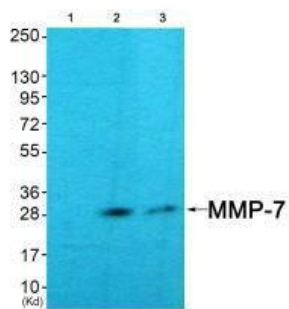
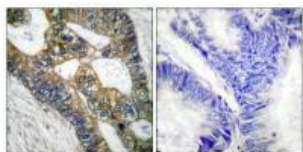
Synthesized peptide derived from human MMP-7.

Storage:

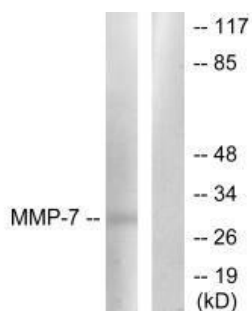
Rabbit IgG in phosphate buffered saline (without Mg²⁺ and Ca²⁺), pH 7.4, 150mM NaCl, 0.02% sodium azide and 50% glycerol.

Product Images

Immunohistochemical analysis of paraffin-embedded human colon carcinoma tissue using MMP-7 antibody.



Western blot analysis of extracts from COS7 cells (Lane 2) and HuvEc cells (Lane 3), using MMP-7 antibody. The lane on the left is treated with synthesized peptide.



Western blot analysis of extracts from COS7 cells, using MMP-7 antibody.