

Product Information

Size:

100ul

Reactivity:

Human, Mouse, Rat

Source:

Rabbit

Isotype:

IgG

Applications:

ELISA, WB, IHC

Recommended dilutions:

ELISA:1:2000-1:10000, WB:1:500-1:3000,
IHC:1:50-1:100

Protein Background:

The protein encoded by this gene is a member of the keratin gene family. The type II cytokeratins consist of basic or neutral proteins which are arranged in pairs of heterotypic keratin chains coexpressed during differentiation of simple and stratified epithelial tissues. This type II cytokeratin is specifically expressed in the basal layer of the epidermis with family member KRT14. Mutations in these genes have been associated with a complex of diseases termed epidermolysis bullosa simplex. The type II cytokeratins are clustered in a region of chromosome 12q12-q13.

Gene ID:

KRT5

Uniprot

P13647

Synonyms:

Keratin type II cytoskeletal 5; Cytokeratin-5; CK-5; K5; 58 kDa cytokeratin

Immunogen:

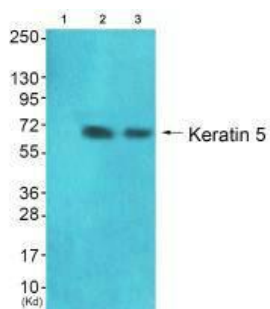
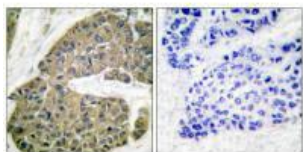
Synthesized peptide derived from human Keratin 5.

Storage:

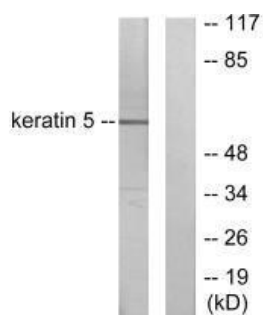
Rabbit IgG in phosphate buffered saline (without Mg²⁺ and Ca²⁺), pH 7.4, 150mM NaCl, 0.02% sodium azide and 50% glycerol.

Product Images

Immunohistochemical analysis of paraffin-embedded human breast carcinoma tissue using Keratin 5 antibody.



Western blot analysis of extracts from 293 cells (Lane 2) and HepG2 cells (Lane 3), using Keratin 5 antibody. The lane on the left is treated with synthesized peptide.



Western blot analysis of extracts from HepG2 cells, using Keratin 5 antibody.