

PACO23664

---

## Product Information

**Size:**

100ul

**Reactivity:**

Human, Mouse, Rat

**Source:**

Rabbit

**Isotype:**

IgG

**Applications:**

ELISA, WB, IHC

**Recommended dilutions:**

ELISA:1:2000-1:10000, WB:1:500-1:3000,  
IHC:1:50-1:100

**Protein Background:**

G-protein coupled receptor for glutamate. Ligand binding causes a conformation change that triggers signaling via guanine nucleotide-binding proteins (G proteins) and modulates the activity of down-stream effectors. Signaling inhibits adenylate cyclase activity.

**Gene ID:**

GRM4

**Uniprot**

Q14833

**Synonyms:**

Metabotropic glutamate receptor 4; mGluR4; GPRC1D; MGLUR4; GRM4

**Immunogen:**

Synthesized peptide derived from human GluR4.

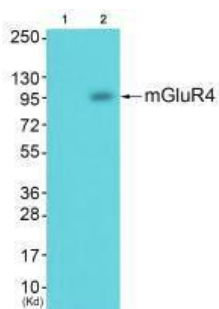
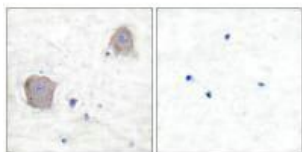
**Storage:**

Rabbit IgG in phosphate buffered saline (without Mg<sup>2+</sup> and Ca<sup>2+</sup>), pH 7.4, 150mM NaCl, 0.02% sodium azide and 50% glycerol.

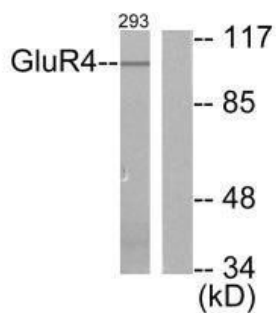
## Product Images

---

Immunohistochemical analysis of paraffin-embedded human brain tissue using GluR4 antibody.



Western blot analysis of extracts from JK cells (Lane 2), using mGluR4 antibody. The lane on the left is treated with synthesized peptide.



Western blot analysis of extracts from 293 cells, untreated or treated with Forskolin (40nM, 30mins), using GluR4 antibody.