

Product Information

Size:

100ul

Reactivity:

Human, Mouse

Source:

Rabbit

Isotype:

IgG

Applications:

ELISA, WB, IHC, IF

Recommended dilutions:

ELISA:1:2000-1:10000, WB:1:500-1:3000,
IHC:1:50-1:100, IF:1:100-1:500

Protein Background:

Isoform GANP: Essential for the generation of high-affinity B-cells against T-cell-dependent antigens by affecting somatic hypermutation at the IgV-regions. May have stimulation-dependent DNA primase activity that would generate extra RNA primers in very rapidly proliferating cells and would support clonal expansion of differentiating B-cells By similarity. Involved in the nuclear export of poly(A)-containing mRNAs by acting as a scaffold for the TREX-2 complex. The TREX-2 complex functions in docking export-competent ribonucleoprotein particles (mRNPs) to the nuclear entrance of the nuclear pore complex (nuclear basket). TREX-2 participates in mRNA export and accurate chromatin positioning in the nucleus by tethering genes to the nuclear periphery. Isoform MCM3AP: Acetyltransferase targeting MCM3. Inhibits initiation of DNA replication, but not elongation.

Gene ID:

MCM3AP

Uniprot

O60318

Synonyms:

80 kda MCM3-associated protein; GANP protein; KIAA0572; MAP80; MCM3A

Immunogen:

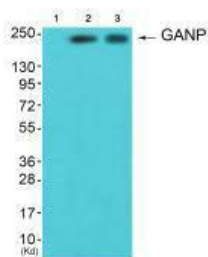
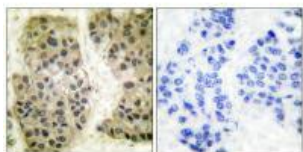
Synthesized peptide derived from human GANP.

Storage:

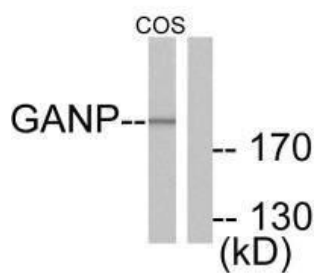
Rabbit IgG in phosphate buffered saline (without Mg²⁺ and Ca²⁺), pH 7.4, 150mM NaCl, 0.02% sodium azide and 50% glycerol.

Product Images

Immunohistochemical analysis of paraffin-embedded human breast carcinoma tissue using GANP antibody.



Western blot analysis of extracts from HepG2 cells (Lane 2) and A549 cells (Lane 3), using GANP antibody. The lane on the left is treated with synthesized peptide.



Western blot analysis of extracts from NIH/3T3 cells, using GANP antibody.