

PACO23641

Product Information

Size:

100ul

Reactivity:

Human

Source:

Rabbit

Isotype:

IgG

Applications:

ELISA, WB, IHC, IF

Recommended dilutions:

ELISA:1:2000-1:10000, WB:1:500-1:3000,
IHC:1:50-1:100, IF:1:100-1:500

Protein Background:

Plays a major role in tight junction-specific obliteration of the intercellular space, through calcium-independent cell-adhesion activity By similarity.

Gene ID:

CLDN3

Uniprot

O15551

Synonyms:

CLD3; CLDN3; CPE-R 2; CPE-receptor 2; Clostridium perfringens enterotoxin receptor 2

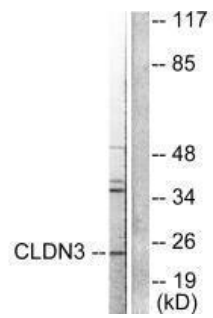
Immunogen:

Synthesized peptide derived from human Claudin 3.

Storage:

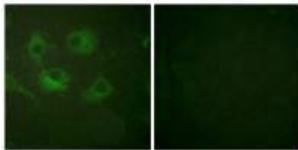
Rabbit IgG in phosphate buffered saline (without Mg²⁺ and Ca²⁺), pH 7.4, 150mM NaCl, 0.02% sodium azide and 50% glycerol.

Product Images



Western blot analysis of extracts from HuvEc cells, using Claudin 3 antibody.

Immunofluorescence analysis of HuvEc cells, using Claudin 3 antibody.



Immunohistochemical analysis of paraffin-embedded human colon carcinoma tissue using Claudin 3 antibody.

