

PACO23638

---

## Product Information

**Size:**

100ul

**Reactivity:**

Human

**Source:**

Rabbit

**Isotype:**

IgG

**Applications:**

ELISA, WB, IF

**Recommended dilutions:**

ELISA:1:2000-1:10000, WB:1:500-1:3000,  
IF:1:100-1:500

**Protein Background:**

May act as a scaffolding protein within caveolar membranes. Interacts directly with G-protein alpha subunits and can functionally regulate their activity. By similarity. Involved in the costimulatory signal essential for T-cell receptor (TCR)-mediated T-cell activation. Its binding to DPP4 induces T-cell proliferation and NF-kappa-B activation in a T-cell receptor/CD3-dependent manner. Recruits CTNNB1 to caveolar membranes and may regulate CTNNB1-mediated signaling through the Wnt pathway.

**Gene ID:**

CAV1

**Uniprot**

Q03135

**Synonyms:**

CAV; CAV1; MSTP085; VIP21; caveolae protein

**Immunogen:**

Synthesized peptide derived from human Caveolin-1.

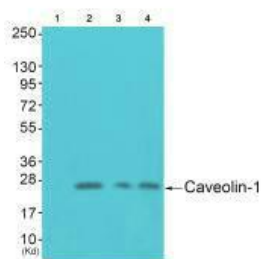
**Storage:**

Rabbit IgG in phosphate buffered saline (without Mg<sup>2+</sup> and Ca<sup>2+</sup>), pH 7.4, 150mM NaCl, 0.02% sodium azide and 50% glycerol.

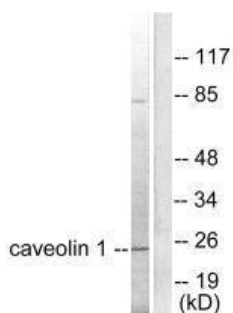
## Product Images

---

Immunofluorescence analysis of HuvEc cells, using Caveolin-1 antibody.



Western blot analysis of extracts from HuvEc cells (Lane 2), Colo cells (Lane 3) and JK cells (Lane 4), using Caveolin-1 antibody. The lane on the left is treated with synthesized peptide.



Western blot analysis of extracts from HuvEc cells, using Caveolin-1 antibody.