

CFL1/CFL2 (Ab-88) Antibody



PACO23593

Product Information

Size:

100ul

Reactivity:

Human, Mouse

Source:

Rabbit

Isotype:

IgG

Applications:

ELISA, WB, IHC, IF

Recommended dilutions:

ELISA:1:2000-1:10000, WB:1:500-1:1000,
IHC:1:50-1:200, IF:1:100-1:200

Protein Background:**Gene ID:**

CFL1/CFL2

Uniprot

P23528/Q9Y281

Synonyms:

Cofilin; non-muscle isoform 18 kDa phosphoprotein;

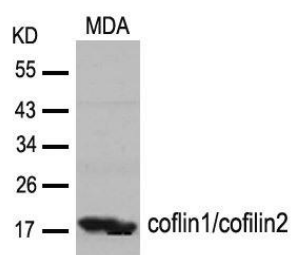
Immunogen:

Peptide sequence around aa. 86~90 (A-T-Y-E-T) derived from Human cofilin1/cofilin2.

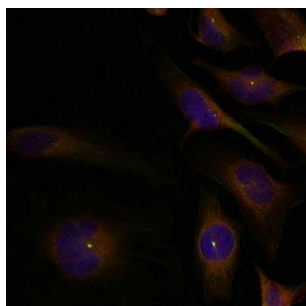
Storage:

Supplied at 1.0mg/mL in phosphate buffered saline (without Mg²⁺ and Ca²⁺), pH 7.4, 150mM NaCl, 0.02% sodium azide and 50% glycerol.

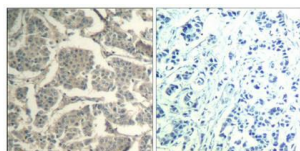
Product Images



Western blot analysis of extracts from MDA cells using cofilin1/cofilin2(Ab-88) Antibody.



Immunofluorescence staining of methanol-fixed HeLa cells using cofilin1/cofilin2(Ab-88) Antibody.



Immunohistochemical analysis of paraffin-embedded human breast carcinoma tissue using cofilin1/cofilin2(Ab-88) Antibody(left) or the same antibody preincubated with blocking peptide(right).