

ADD1 (Ab-726) Antibody



PACO23564

Product Information

Size:

100ul

Reactivity:

Human, Mouse, Rat

Source:

Rabbit

Isotype:

IgG

Applications:

ELISA, WB, IHC, IF

Recommended dilutions:

ELISA:1:2000-1:10000, WB:1:500-1:1000,
IHC:1:50-1:200, IF:1:100-1:200

Protein Background:

Adducins are a family of cytoskeleton proteins encoded by three genes (alpha, beta, gamma). Adducin is a heterodimeric protein that consists of related subunits, which are produced from distinct genes but share a similar structure. alpha- and beta-adducin include a protease-resistant N-terminal region and a protease-sensitive, hydrophilic C-terminal region. alpha- and gamma-adducins are ubiquitously expressed. In contrast, beta-adducin is expressed at high levels in brain and hematopoietic tissues. Adducin binds with high affinity to Ca²⁺/calmodulin and is a substrate for protein kinases A and C. Alternative splicing results in multiple variants encoding distinct isoforms; however, not all variants have been fully described.

Gene ID:

ADD1

Uniprot

P35611

Synonyms:

ADDA; Erythrocyte adducin alpha subunit;

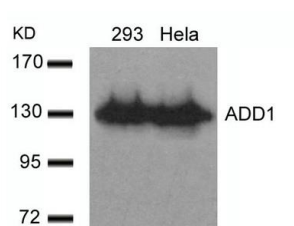
Immunogen:

Peptide sequence around aa.724~728 (T-P-S-F-L) derived from Human ADD1.

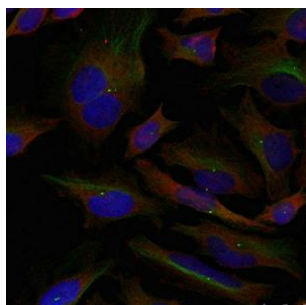
Storage:

Supplied at 1.0mg/mL in phosphate buffered saline (without Mg²⁺ and Ca²⁺), pH 7.4, 150mM NaCl, 0.02% sodium azide and 50% glycerol.

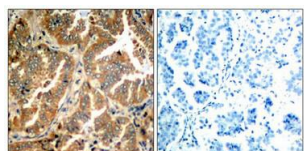
Product Images



Western blot analysis of extracts from 293 and HeLa cells using ADD1(Ab-726) Antibody.



Immunofluorescence staining of methanol-fixed HeLa cells using ADD1(Ab-726) Antibody.



Immunohistochemical analysis of paraffin-embedded human lung carcinoma tissue using ADD1(Ab-726) Antibody(left) or the same antibody preincubated with blocking peptide(right).