

# PTK2 (Ab-925) Antibody



PACO23560

---

## Product Information

**Size:**

100ul

**Reactivity:**

Human, Mouse, Rat

**Source:**

Rabbit

**Isotype:**

IgG

**Applications:**

ELISA, WB, IHC, IF

**Recommended dilutions:**

ELISA:1:2000-1:10000, WB:1:500-1:1000,  
IHC:1:50-1:200, IF:1:100-1:200

**Protein Background:**

Non-receptor protein-tyrosine kinase implicated in signaling pathways involved in cell motility, proliferation and apoptosis. Activated by tyrosine-phosphorylation in response to either integrin clustering induced by cell adhesion or antibody cross-linking, or via G-protein coupled receptor (GPCR) occupancy by ligands such as bombesin or lysophosphatidic acid, or via LDL receptor occupancy. Plays a potential role in oncogenic transformations resulting in increased kinase activity.

**Gene ID:**

PTK2

**Uniprot**

Q05397

**Synonyms:**

FADK 1; FAK1; PTK2

**Immunogen:**

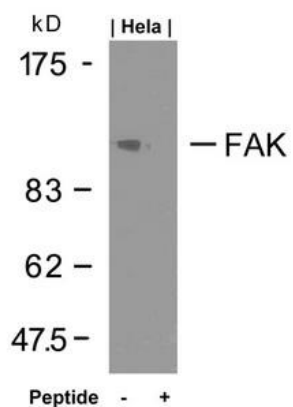
Peptide sequence around aa.923~927 (K-V-Y-E-N) derived from Human FAK.

**Storage:**

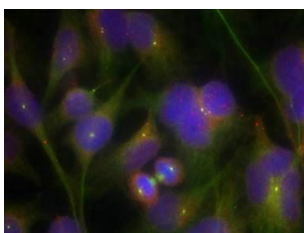
Supplied at 1.0mg/mL in phosphate buffered saline (without Mg<sup>2+</sup> and Ca<sup>2+</sup>), pH 7.4, 150mM NaCl, 0.02% sodium azide and 50% glycerol.

## Product Images

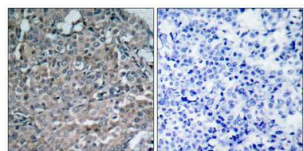
---



Western blot analysis of extracts from HeLa cells using FAK(Ab-925) Antibody and the same antibody preincubated with blocking peptide.



Immunofluorescence staining of methanol-fixed HeLa cells using FAK(Ab-925) Antibody.



Immunohistochemical analysis of paraffin-embedded human breast carcinoma tissue using FAK(Ab-925) Antibody(left) or the same antibody preincubated with blocking peptide(right).