

MAP3K5 (Ab-83) Antibody



PACO23555

Product Information

Size:

100ul

Reactivity:

Human

Source:

Rabbit

Isotype:

IgG

Applications:

ELISA, WB, IHC, IF

Recommended dilutions:

ELISA:1:2000-1:10000, WB:1:500-1:1000,
IHC:1:50-1:200, IF:1:100-1:200

Protein Background:

Component of a protein kinase signal transduction cascade. Phosphorylates and activates MAP2K4 and MAP2K6, which in turn activate the JNK and p38 MAP kinases, respectively. Overexpression induces apoptotic cell death.

Gene ID:

MAP3K5

Uniprot

Q99683

Synonyms:

ASK-1; M3K5; MAP3K5; MAPK/ERK kinase kinase 5; MAPKKK5

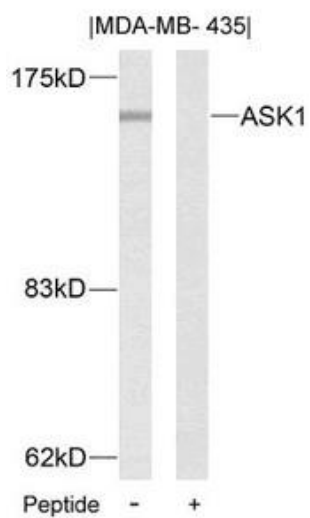
Immunogen:

Peptide sequence around aa.81~85 (G-S-S-V-G) derived from Human ASK1.

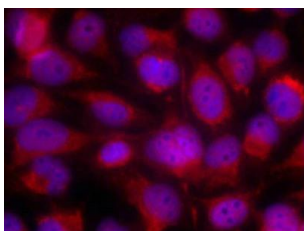
Storage:

Supplied at 1.0mg/mL in phosphate buffered saline (without Mg²⁺ and Ca²⁺), pH 7.4, 150mM NaCl, 0.02% sodium azide and 50% glycerol.

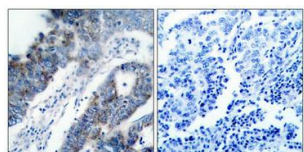
Product Images



Western blot analysis of extracts from MDA-MB-435 cells using ASK1(Ab-83) Antibody and the same antibody preincubated with blocking peptide.



Immunofluorescence staining of methanol-fixed HeLa cells using ASK1(Ab-83) Antibody.



Immunohistochemical analysis of paraffin-embedded human breast carcinoma tissue using ASK1(Ab-83) Antibody(left) or the same antibody preincubated with blocking peptide(right).