

MAP2K3 (Ab-189) Antibody



PACO23553

Product Information

Size:

100ul

Reactivity:

Human, Rat

Source:

Rabbit

Isotype:

IgG

Applications:

ELISA, WB, IHC, IF

Recommended dilutions:

ELISA:1:2000-1:10000, WB:1:500-1:1000,
IHC:1:50-1:200, IF:1:100-1:200

Protein Background:**Gene ID:**

MAP2K3

Uniprot

P46734

Synonyms:

MAP kinase kinase 3; MAP2K3; MAPK/ERK kinase 3; MAPKK 3; MEK3

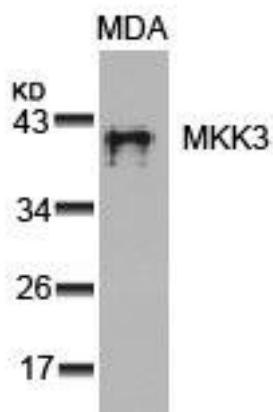
Immunogen:

Peptide sequence around aa.187~191 (V-D-S-V-A) derived from Human MKK3.

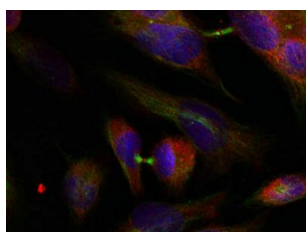
Storage:

Supplied at 1.0mg/mL in phosphate buffered saline (without Mg²⁺ and Ca²⁺), pH 7.4,
150mM NaCl, 0.02% sodium azide and 50% glycerol.

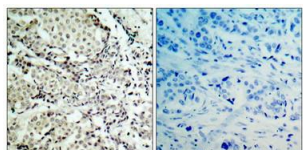
Product Images



Western blot analysis of extracts from MDA cells using MKK3(Ab-189) Antibody.



Immunofluorescence staining of methanol-fixed HeLa cells using MKK3(Ab-189) Antibody.



Immunohistochemical analysis of paraffin-embedded human breast carcinoma tissue using MKK3(Ab-189) Antibody(left) or the same antibody preincubated with blocking peptide(right).