

KDR (Ab-951) Antibody



PACO23550

Product Information

Size:

100ul

Reactivity:

Human, Mouse, Rat

Source:

Rabbit

Isotype:

IgG

Applications:

ELISA, WB, IHC, IF

Recommended dilutions:

ELISA:1:2000-1:10000, WB:1:500-1:1000,
IHC:1:50-1:200, IF:1:100-1:200

Protein Background:

Receptor for VEGF or VEGFC. Has a tyrosine-protein kinase activity. The VEGF-kinase ligand/receptor signaling system plays a key role in vascular development and regulation of vascular permeability. In case of HIV-1 infection, the interaction with extracellular viral Tat protein seems to enhance angiogenesis in Kaposi's sarcoma lesions.

Gene ID:

KDR

Uniprot

P35968

Synonyms:

FLK1; KDR; VEGFR2; VGR2; kinase insert domain receptor

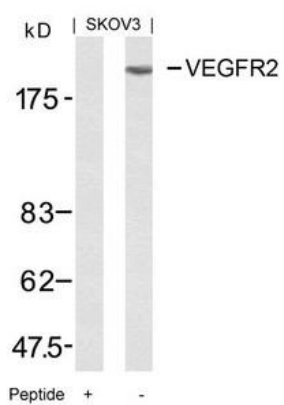
Immunogen:

Peptide sequence around aa.949~953 (K-D-Y-V-G) derived from Human VEGFR2.

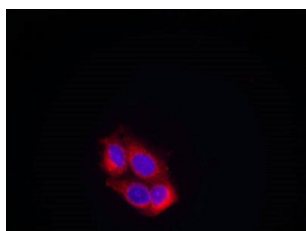
Storage:

Supplied at 1.0mg/mL in phosphate buffered saline (without Mg²⁺ and Ca²⁺), pH 7.4, 150mM NaCl, 0.02% sodium azide and 50% glycerol.

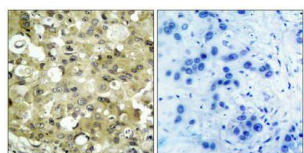
Product Images



Western blot analysis of extracts from SKOV3 cells using VEGFR2(Ab-951) Antibody and the same antibody preincubated with blocking peptide.



Immunofluorescence staining of methanol-fixed MCF cells using VEGFR2(Ab-951) Antibody.



Immunohistochemical analysis of paraffin-embedded human breast carcinoma tissue using VEGFR2(Ab-951) Antibody(left) or the same antibody preincubated with blocking peptide(right).