

ATF2 (Ab-62 or 44) Antibody



PACO23539

Product Information

Size:

100ul

Reactivity:

Human, Mouse, Rat

Source:

Rabbit

Isotype:

IgG

Applications:

ELISA, WB, IHC, IF

Recommended dilutions:

ELISA:1:2000-1:10000, WB:1:500-1:1000,
IHC:1:50-1:200, IF:1:100-1:200

Protein Background:

Transcriptional activator, probably constitutive, which binds to the cAMP-responsive element (CRE) (consensus: 5'-GTGACGT[AC][AG]-3'), a sequence present in many viral and cellular promoters. Interaction with JUN redirects JUN to bind to CRES preferentially over the 12-O-tetradecanoylphorbol-13-acetate response elements (TRES) as part of an ATF2-c-Jun complex.

Gene ID:

ATF2

Uniprot

P15336

Synonyms:

CREB2; CREBP1;

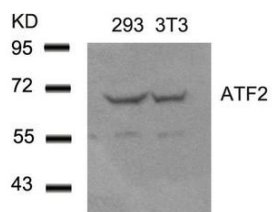
Immunogen:

Peptide sequence around aa. serine 60~64 or 42~46 (N-D-S-V-I) derived from Human ATF2.

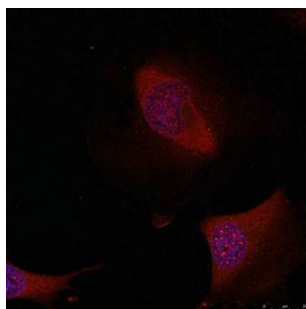
Storage:

Supplied at 1.0mg/mL in phosphate buffered saline (without Mg²⁺ and Ca²⁺), pH 7.4, 150mM NaCl, 0.02% sodium azide and 50% glycerol.

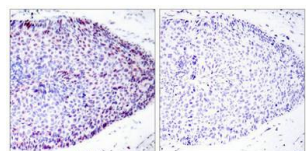
Product Images



Western blot analysis of extracts from 293 and 3T3 cells using ATF2(Ab-62 or 44) Antibody.



Immunofluorescence staining of methanol-fixed HeLa cells using ATF2(Ab-62 or 44) Antibody.



Immunohistochemical analysis of paraffin-embedded human breast carcinoma tissue using ATF2(Ab-62 or 44) Antibody(left) or the same antibody preincubated with blocking peptide(right).