

PACO23529

Product Information

Size:

100ul

Reactivity:

Human, Mouse, Rat

Source:

Rabbit

Isotype:

IgG

Applications:

ELISA, IHC

Recommended dilutions:

ELISA:1:2000-1:10000, IHC:1:50-1:100

Protein Background:

TDE1, tumor differentially expressed protein 1, is a multi-pass membrane protein also known as serine incorporator 3. Also found on the membranes of the Golgi apparatus within cells, TDE1 is highly expressed in neuronal populations but is also found in thymus, kidney, liver and testis. Expression levels of TDE1 in tumors can be as much as tenfold the amount found in normal tissue of the same type. This increased expression implicates TDE1 as being involved in the cellular transformation from normal to malignant tissue.

Gene ID:

SERINC3

Uniprot

Q13530

Synonyms:

TDE; TDE1; AIGP1; TMS-1; DIFF33; SBBI99

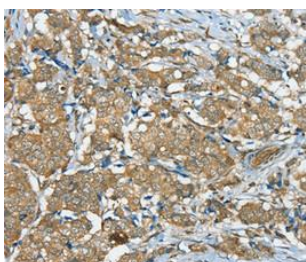
Immunogen:

Synthetic peptide corresponding to a region derived from internal residues of human serine incorporator 3.

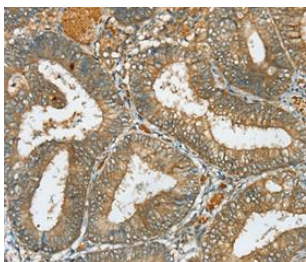
Storage:

Rabbit IgG in pH7.3 PBS, 0.05% NaN₃, 50% Glycerol.

Product Images



Immunohistochemical analysis of paraffin-embedded Human breast cancer tissue using at dilution 1/40.



Immunohistochemical analysis of paraffin-embedded Human colon cancer tissue using at dilution 1/40.