

## Product Information

**Size:**

100ul

**Reactivity:**

Human, Mouse, Rat

**Source:**

Rabbit

**Isotype:**

IgG

**Applications:**

ELISA, IHC

**Recommended dilutions:**

ELISA:1:2000-1:10000, IHC:1:50-1:100

**Protein Background:**

The protein encoded by this gene is an antigen that is overexpressed in many cancers but that is also expressed in normal testis. This gene is found in a duplicated region of the X-chromosome and therefore has a neighboring gene of identical sequence. Expressed in testis and ovary and in a wide variety of cancers. Detected in uterine myometrium. Expressed from 18 weeks until birth in human fetal testis. In the adult testis, is strongly expressed in spermatogonia and in primary spermatocytes, but not in post-meiotic cells or in testicular somatic cells (at protein level).

**Gene ID:**

CTAG1A

**Uniprot**

P78358

**Synonyms:**

CTAG; CTAG1; ESO1; LAGE2; LAGE2A/CTAG1B

**Immunogen:**

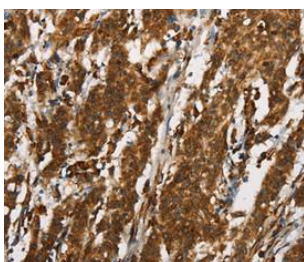
Synthetic peptide corresponding to a region derived from internal residues of human Cancer/testis antigen 1.

**Storage:**

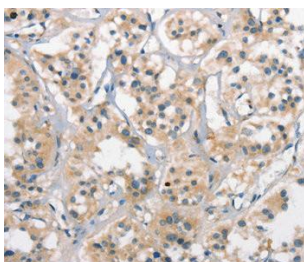
Rabbit IgG in pH7.3 PBS, 0.05% NaN<sub>3</sub>, 50% Glycerol.

## Product Images

---



Immunohistochemical analysis of paraffin-embedded Human gastric cancer tissue using at dilution 1/25.



Immunohistochemical analysis of paraffin-embedded Human thyroid cancer tissue using at dilution 1/25.