

# ZC3H8 Antibody



PACO23500

---

## Product Information

**Size:**

100ul

**Reactivity:**

Human

**Source:**

Rabbit

**Isotype:**

IgG

**Applications:**

ELISA, WB, IHC

**Recommended dilutions:**

ELISA:1:2000-1:10000, WB:1:500-1:3000,  
IHC:1:50-1:100

**Protein Background:**

Acts as a transcriptional repressor of the GATA3 promoter. Sequence-specific DNA-binding factor that binds to the 5'-AGGTCTC-3' sequence within the negative cis-acting element intronic regulatory region (IRR) of the GATA3 gene. By similarity. Induces thymocyte apoptosis when overexpressed, which may indicate a role in regulation of thymocyte homeostasis.

**Gene ID:**

ZC3H8

**Uniprot**

Q8N5P1

**Synonyms:**

Zinc finger CCCH domain-containing protein 8; ZC3H8; ZC3HDC8;

**Immunogen:**

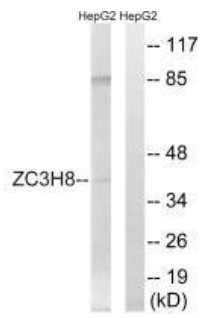
Synthesized peptide derived from internal of human ZC3H8.

**Storage:**

Rabbit IgG in phosphate buffered saline (without Mg<sup>2+</sup> and Ca<sup>2+</sup>), pH 7.4, 150mM NaCl, 0.02% sodium azide and 50% glycerol.

## Product Images

---



Western blot analysis of extracts from HepG2 cells, using ZC3H8 antibody.

Immunohistochemistry analysis of paraffin-embedded human colon carcinoma tissue, using ZC3H8 antibody.

