

ZSCAN22 Antibody



PACO23499

Product Information

Size:

100ul

Reactivity:

Human

Source:

Rabbit

Isotype:

IgG

Applications:

ELISA, WB, IHC

Recommended dilutions:

ELISA:1:2000-1:10000, WB:1:500-1:3000,
IHC:1:50-1:100

Protein Background:

May be involved in transcriptional regulation.

Gene ID:

ZSCAN22

Uniprot

P10073

Synonyms:

Zinc finger and SCAN domain-containing protein 22; Zinc finger protein 50; Krueppel-related zinc finger protein 2; Protein HKR2; ZSCAN22

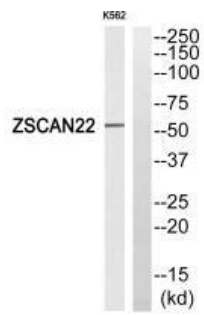
Immunogen:

Synthesized peptide derived from internal of human ZSCAN22.

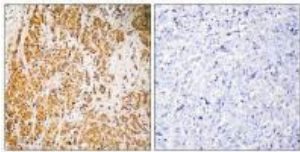
Storage:

Rabbit IgG in phosphate buffered saline (without Mg²⁺ and Ca²⁺), pH 7.4, 150mM NaCl, 0.02% sodium azide and 50% glycerol.

Product Images



Western blot analysis of extracts from K562 cells, using ZSCAN22 antibody.



Immunohistochemistry analysis of paraffin-embedded human breast carcinoma tissue, using ZSCAN22 antibody.