

ZBTB40 Antibody



PACO23498

Product Information

Size:

100ul

Reactivity:

Human

Source:

Rabbit

Isotype:

IgG

Applications:

ELISA, WB, IHC

Recommended dilutions:

ELISA:1:2000-1:10000, WB:1:500-1:3000,
IHC:1:50-1:100

Protein Background:

May be involved in transcriptional regulation.

Gene ID:

ZBTB40

Uniprot

Q9NUA8

Synonyms:

Zinc finger and BTB domain-containing protein 40; ZBTB40; KIAA0478;

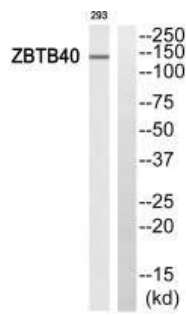
Immunogen:

Synthesized peptide derived from C-terminal of human ZBTB40.

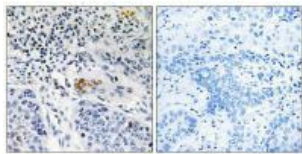
Storage:

Rabbit IgG in phosphate buffered saline (without Mg²⁺ and Ca²⁺), pH 7.4, 150mM NaCl, 0.02% sodium azide and 50% glycerol.

Product Images



Western blot analysis of extracts from 293 cells, using ZBTB40 antibody.



Immunohistochemistry analysis of paraffin-embedded human lung carcinoma tissue, using ZBTB40 antibody.