

PACO23497

Product Information

Size:

100ul

Reactivity:

Human

Source:

Rabbit

Isotype:

IgG

Applications:

ELISA, WB, IHC

Recommended dilutions:

ELISA:1:2000-1:10000, WB:1:500-1:3000,
IHC:1:50-1:100

Protein Background:

Component of the ATAC complex, a complex with histone acetyltransferase activity on histones H3 and H4.

Gene ID:

YEATS2

Uniprot

Q9ULM3

Synonyms:

YEATS domain-containing protein 2; YEATS2; KIAA1197;

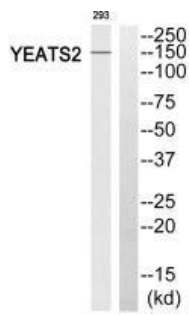
Immunogen:

Synthesized peptide derived from internal of human YEATS2.

Storage:

Rabbit IgG in phosphate buffered saline (without Mg²⁺ and Ca²⁺), pH 7.4, 150mM NaCl, 0.02% sodium azide and 50% glycerol.

Product Images



Western blot analysis of extracts from 293 cells, using YEATS2 antibody.

Immunohistochemistry analysis of paraffin-embedded human breast carcinoma tissue using YEATS2 antibody.

