

## Product Information

**Size:**

100ul

**Reactivity:**

Human

**Source:**

Rabbit

**Isotype:**

IgG

**Applications:**

ELISA, WB, IHC

**Recommended dilutions:**

ELISA:1:2000-1:10000, WB:1:500-1:3000,  
IHC:1:50-1:100

**Protein Background:**

Poly(A) polymerase that creates the 3'-poly(A) tail of specific pre-mRNAs. Localizes to nuclear speckles together with PIP5K1A and mediates polyadenylation of a select set of mRNAs, such as HMOX1. In addition to polyadenylation, it is also required for the 3'-end cleavage of pre-mRNAs: binds to the 3'UTR of targeted pre-mRNAs and promotes the recruitment and assembly of the CPSF complex on the 3'UTR of pre-mRNAs. In addition to adenylyltransferase activity, also has uridylyltransferase activity. However, the ATP ratio is higher than UTP in cells, suggesting that it functions primarily as a poly(A) polymerase. Acts as a specific terminal uridylyltransferase for U6 snRNA in vitro: responsible for a controlled elongation reaction that results in the restoration of the four 3'-terminal UMP-residues found in newly transcribed U6 snRNA. Not involved in replication-dependent histone mRNA degradation.

**Gene ID:**

TUT1

**Uniprot**

Q9H6E5

**Synonyms:**

U6 snRNA-specific terminal uridylyltransferase 1; EC 2.7.7.52; U6-TUTase; RNA-binding protein 21; RNA-binding motif protein 21

**Immunogen:**

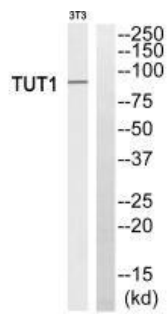
Synthesized peptide derived from internal of human TUT1.

**Storage:**

Rabbit IgG in phosphate buffered saline (without Mg<sup>2+</sup> and Ca<sup>2+</sup>), pH 7.4, 150mM NaCl, 0.02% sodium azide and 50% glycerol.

## Product Images

---



Western blot analysis of extracts from 3T3 cells, using TUT1 antibody.

Immunohistochemistry analysis of paraffin-embedded human colon carcinoma tissue using TUT1 antibody.

