

PACO23488

Product Information

Size:

100ul

Reactivity:

Human

Source:

Rabbit

Isotype:

IgG

Applications:

ELISA, WB, IHC

Recommended dilutions:

ELISA:1:2000-1:10000, WB:1:500-1:3000,
IHC:1:50-1:100

Protein Background:

The protein encoded by this gene belongs to the tigger subfamily of the pogo superfamily of DNA-mediated transposons in humans. These proteins are related to DNA transposons found in fungi and nematodes, and more distantly to the Tc1 and mariner transposases. They are also very similar to the major mammalian centromere protein B. The exact function of this gene is not known.

Gene ID:

TIGD3

Uniprot

Q6B0B8

Synonyms:

Tigger transposable element-derived protein 3; TIGD3;

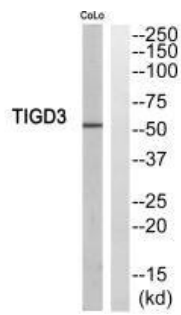
Immunogen:

Synthesized peptide derived from C-terminal of human TIGD3.

Storage:

Rabbit IgG in phosphate buffered saline (without Mg²⁺ and Ca²⁺), pH 7.4, 150mM NaCl, 0.02% sodium azide and 50% glycerol.

Product Images



Western blot analysis of extracts from COLO205 cells, using TIGD3 antibody.

Immunohistochemistry analysis of paraffin-embedded human brain tissue, using TIGD3 antibody.

