

STAC2 Antibody



PACO23482

Product Information

Size:

100ul

Reactivity:

Human

Source:

Rabbit

Isotype:

IgG

Applications:

ELISA, WB

Recommended dilutions:

ELISA:1:2000-1:10000, WB:1:500-1:3000

Protein Background:**Gene ID:**

STAC2

Uniprot

Q6ZMT1

Synonyms:

24b2; 24b2/STAC2; SH3 and cysteine rich domain 2;

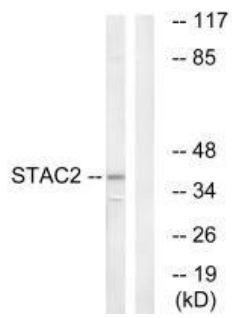
Immunogen:

Synthesized peptide derived from internal of human STAC2.

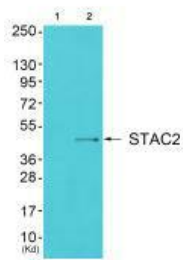
Storage:

Rabbit IgG in phosphate buffered saline (without Mg²⁺ and Ca²⁺), pH 7.4, 150mM NaCl, 0.02% sodium azide and 50% glycerol.

Product Images



Western blot analysis of extracts from K562 cells, using STAC2 antibody.



Western blot analysis of extracts from cos-7 cells (Lane 2), using STAC2 antibody. The lane on the left is treated with synthesized peptide.