

PACO23479

---

## Product Information

**Size:**

100ul

**Reactivity:**

Human, Mouse

**Source:**

Rabbit

**Isotype:**

IgG

**Applications:**

ELISA, WB, IHC

**Recommended dilutions:**

ELISA:1:2000-1:10000, WB:1:500-1:3000,  
IHC:1:50-1:100

**Protein Background:**

The PR65 subunit of protein phosphatase 2A serves as a scaffolding molecule to coordinate the assembly of the catalytic subunit and a variable regulatory B subunit.

**Gene ID:**

PPP2R1B

**Uniprot**

P30154

**Synonyms:**

2AAB; beta isoform of regulatory subunit A; protein phosphatase 2; PP2A; A

**Immunogen:**

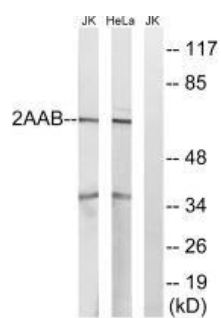
Synthesized peptide derived from internal of human PPP2R1B.

**Storage:**

Rabbit IgG in phosphate buffered saline (without Mg<sup>2+</sup> and Ca<sup>2+</sup>), pH 7.4, 150mM NaCl, 0.02% sodium azide and 50% glycerol.

## Product Images

---



Western blot analysis of extracts from Jurkat cells and HeLa cells, using PPP2R1B antibody.

Immunohistochemistry analysis of paraffin-embedded human breast carcinoma tissue using PPP2R1B antibody.

