

# RSAD1 Antibody



PACO23472

---

## Product Information

**Size:**

100ul

**Reactivity:**

Human

**Source:**

Rabbit

**Isotype:**

IgG

**Applications:**

ELISA, WB, IHC

**Recommended dilutions:**

ELISA:1:2000-1:10000, WB:1:500-1:3000,  
IHC:1:50-1:100

**Protein Background:**

May be involved in porphyrin cofactor biosynthesis By similarity.

**Gene ID:**

RSAD1

**Uniprot**

Q9HA92

**Synonyms:**

EC 1.3.99. -; Oxygen-independent coproporphyrinogen III oxidase-like protein RSAD1;

**Immunogen:**

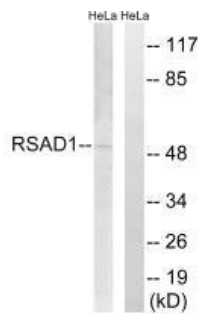
Synthesized peptide derived from internal of human RSAD1.

**Storage:**

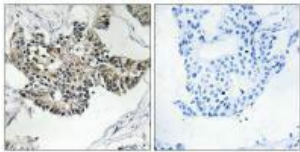
Rabbit IgG in phosphate buffered saline (without Mg<sup>2+</sup> and Ca<sup>2+</sup>), pH 7.4, 150mM NaCl, 0.02% sodium azide and 50% glycerol.

## Product Images

---



Western blot analysis of extracts from HeLa cells, using RSAD1 antibody.



Immunohistochemistry analysis of paraffin-embedded human breast carcinoma tissue, using RSAD1 antibody.