

PACO23463

Product Information

Size:

100ul

Reactivity:

Human

Source:

Rabbit

Isotype:

IgG

Applications:

ELISA, WB, IHC

Recommended dilutions:

ELISA:1:2000-1:10000, WB:1:500-1:3000,
IHC:1:50-1:100

Protein Background:

DNA deaminase (cytidine deaminase) which acts as an inhibitor of retrovirus replication and retrotransposon mobility via deaminase-dependent and -independent mechanisms. Exhibits antiviral activity against vif-deficient HIV-1. After the penetration of retroviral nucleocapsids into target cells of infection and the initiation of reverse transcription, it can induce the conversion of cytosine to uracil in the minus-sense single-strand viral DNA, leading to G-to-A hypermutations in the subsequent plus-strand viral DNA. The resultant detrimental levels of mutations in the proviral genome, along with a deamination-independent mechanism that works prior to the proviral integration, together exert efficient antiretroviral effects in infected target cells. Selectively targets single-stranded DNA and does not deaminate double-stranded DNA or single- or double-stranded RNA. May inhibit the mobility of LTR and non-LTR retrotransposons.

Gene ID:

APOBEC3D/APOBEC3F

Uniprot

Q96AK3/Q8IUX4

Synonyms:

Probable DNA dC->dU-editing enzyme APOBEC-3D; EC 3.5.4. -; APOBEC3D;

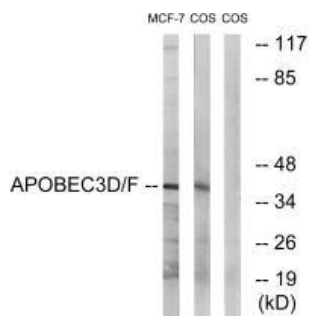
Immunogen:

Synthesized peptide derived from internal of human APOBEC3D/F.

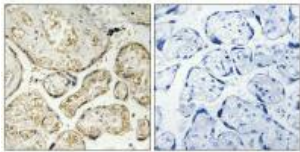
Storage:

Rabbit IgG in phosphate buffered saline (without Mg²⁺ and Ca²⁺), pH 7.4, 150mM NaCl, 0.02% sodium azide and 50% glycerol.

Product Images



Western blot analysis of extracts from MCF-7 cells and COS-7 cells, using APOBEC3D/F antibody.



Immunohistochemistry analysis of paraffin-embedded human placenta tissue using APOBEC3D/F antibody.