

SLC25A21 Antibody



PACO23449

Product Information

Size:

100ul

Reactivity:

Human, Mouse, Rat

Source:

Rabbit

Isotype:

IgG

Applications:

ELISA, WB, IHC

Recommended dilutions:

ELISA:1:2000-1:10000, WB:1:500-1:3000,
IHC:1:50-1:100

Protein Background:

Transports C5-C7 oxodicarboxylates across the inner membranes of mitochondria. Can transport 2-oxoadipate, 2-oxoglutarate, adipate, glutarate, and to a lesser extent, pimelate, 2-oxopimelate, 2-aminoadipate, oxaloacetate, and citrate.

Gene ID:

SLC25A21

Uniprot

Q9BQT8

Synonyms:

mgc126570; odc; odc1; oxodicarboxylate carrier; slc25a21

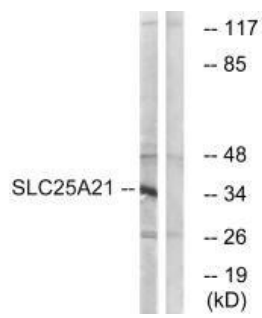
Immunogen:

Synthesized peptide derived from internal of human SLC25A21.

Storage:

Rabbit IgG in phosphate buffered saline (without Mg²⁺ and Ca²⁺), pH 7.4, 150mM NaCl, 0.02% sodium azide and 50% glycerol.

Product Images



Western blot analysis of extracts from HepG2 cells, using SLC25A21 antibody.

Immunohistochemistry analysis of paraffin-embedded human liver carcinoma tissue using SLC25A21 antibody.

