

SAR1B Antibody



PACO23440

Product Information

Size:

100ul

Reactivity:

Human, Mouse, Rat

Source:

Rabbit

Isotype:

IgG

Applications:

ELISA, WB, IHC

Recommended dilutions:

ELISA:1:2000-1:10000, WB:1:500-1:3000,
IHC:1:50-1:100

Protein Background:

Involved in transport from the endoplasmic reticulum to the Golgi apparatus. Activated by the guanine nucleotide exchange factor PREB. Involved in the selection of the protein cargo and the assembly of the COPII coat complex.

Gene ID:

SAR1B

Uniprot

Q9Y6B6

Synonyms:

GTP-binding protein SAR1b; GTBPB; SAR1B; SARA2; SARB

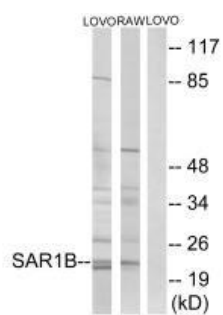
Immunogen:

Synthesized peptide derived from internal of human SAR1B.

Storage:

Rabbit IgG in phosphate buffered saline (without Mg²⁺ and Ca²⁺), pH 7.4, 150mM NaCl, 0.02% sodium azide and 50% glycerol.

Product Images



Western blot analysis of extracts from LOVO cells and RAW264.7 cells, using SAR1B antibody.

Immunohistochemistry analysis of paraffin-embedded human placenta tissue using SAR1B antibody.

