

PACO23439

Product Information

Size:

100ul

Reactivity:

Human

Source:

Rabbit

Isotype:

IgG

Applications:

ELISA, WB, IHC

Recommended dilutions:

ELISA:1:2000-1:10000, WB:1:500-1:3000,
IHC:1:50-1:100

Protein Background:

Required for mitochondrial integrity and T-cell survival. May contribute to T-cell quiescence By similarity.

Gene ID:

GIMAP5

Uniprot

Q96F15

Synonyms:

GIMA5; GTPase; IMAP family 5; HIMAP3; IAN-5

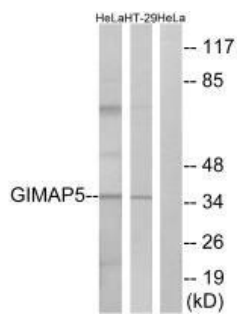
Immunogen:

Synthesized peptide derived from internal of human GIMAP5.

Storage:

Rabbit IgG in phosphate buffered saline (without Mg²⁺ and Ca²⁺), pH 7.4, 150mM NaCl, 0.02% sodium azide and 50% glycerol.

Product Images



Western blot analysis of extracts from HeLa cells and HT-29 cells, using GIMAP5 antibody.

Immunohistochemistry analysis of paraffin-embedded human placenta tissue using GIMAP5 antibody.

