

PACO23438

---

## Product Information

**Size:**

100ul

**Reactivity:**

Human

**Source:**

Rabbit

**Isotype:**

IgG

**Applications:**

ELISA, WB, IF

**Recommended dilutions:**

ELISA:1:2000-1:10000, WB:1:500-1:3000,  
IF:1:100-1:500

**Protein Background:**

The heterodimer formed by GIMAP2 and GIMAP7 has GTPase activity. In contrast, GIMAP2 has no GTPase activity by itself.

**Gene ID:**

GIMAP2

**Uniprot**

Q9UG22

**Synonyms:**

gima2; gimap2; gtpase imap family member 2; gtpase; imap family member 2

**Immunogen:**

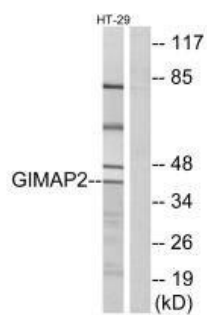
Synthesized peptide derived from internal of human GIMAP2.

**Storage:**

Rabbit IgG in phosphate buffered saline (without Mg<sup>2+</sup> and Ca<sup>2+</sup>), pH 7.4, 150mM NaCl, 0.02% sodium azide and 50% glycerol.

## Product Images

---



Western blot analysis of extracts from HT-29 cells, using GIMAP2 antibody.

Immunofluorescence analysis of A549 cells, using GIMAP2 antibody.

