

PACO23437

Product Information

Size:

100ul

Reactivity:

Human

Source:

Rabbit

Isotype:

IgG

Applications:

ELISA, WB, IF

Recommended dilutions:

ELISA:1:2000-1:10000, WB:1:500-1:3000,
IF:1:100-1:500

Protein Background:

Ras proteins bind GDP/GTP and possess intrinsic GTPase activity. Plays an important role in the tumor-like growth properties of embryonic stem cells By similarity.

Gene ID:

ERAS

Uniprot

Q7Z444

Synonyms:

GTPase ERas [Precursor]; E-Ras; Embryonic stem cell-expressed Ras; ERAS; HRAS2

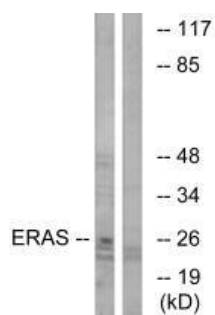
Immunogen:

Synthesized peptide derived from C-terminal of human ERAS.

Storage:

Rabbit IgG in phosphate buffered saline (without Mg²⁺ and Ca²⁺), pH 7.4, 150mM NaCl, 0.02% sodium azide and 50% glycerol.

Product Images



Western blot analysis of extracts from Jurkat cells, using ERAS antibody.

Immunofluorescence analysis of A549 cells, using ERAS antibody.

