

R3HCC1L Antibody



PACO23436

Product Information

Size:

100ul

Reactivity:

Human, Mouse

Source:

Rabbit

Isotype:

IgG

Applications:

ELISA, WB, IHC

Recommended dilutions:

ELISA:1:2000-1:10000, WB:1:500-1:3000,
IHC:1:50-1:100

Protein Background:

3 isoforms of the human protein are produced by alternative splicing.

Gene ID:

R3HCC1L

Uniprot

Q7Z5L2

Synonyms:

GIDRP; GIDRP86; growth inhibition and differentiation-related 88; mitochondrial space protein 32.1; PSORT

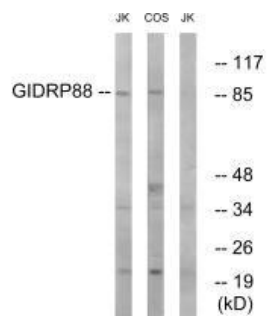
Immunogen:

Synthesized peptide derived from internal of human GIDRP88.

Storage:

Rabbit IgG in phosphate buffered saline (without Mg²⁺ and Ca²⁺), pH 7.4, 150mM NaCl, 0.02% sodium azide and 50% glycerol.

Product Images



Western blot analysis of extracts from Jurkat cells and COS cells, using GIDRP88 antibody.

Immunohistochemistry analysis of paraffin-embedded human esophagus tissue using GIDRP88 antibody.

