

# GPRIN2 Antibody



PACO23434

---

## Product Information

**Size:**

100ul

**Reactivity:**

Human

**Source:**

Rabbit

**Isotype:**

IgG

**Applications:**

ELISA, WB, IHC

**Recommended dilutions:**

ELISA:1:2000-1:10000, WB:1:500-1:3000,  
IHC:1:50-1:100

**Protein Background:**

May be involved in neurite outgrowth.

**Gene ID:**

GPRIN2

**Uniprot**

O60269

**Synonyms:**

G protein-regulated inducer of neurite outgrowth 2; GRIN2;

**Immunogen:**

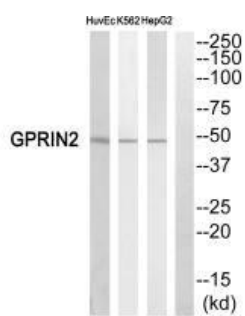
Synthesized peptide derived from N-terminal of human GPRIN2.

**Storage:**

Rabbit IgG in phosphate buffered saline (without Mg<sup>2+</sup> and Ca<sup>2+</sup>), pH 7.4, 150mM NaCl, 0.02% sodium azide and 50% glycerol.

## Product Images

---



Western blot analysis of extracts from HuvEc cells, K562 cells and HepG2 cells, using GPRIN2 antibody.

Immunohistochemistry analysis of paraffin-embedded human brain tissue using GPRIN2 antibody.

